

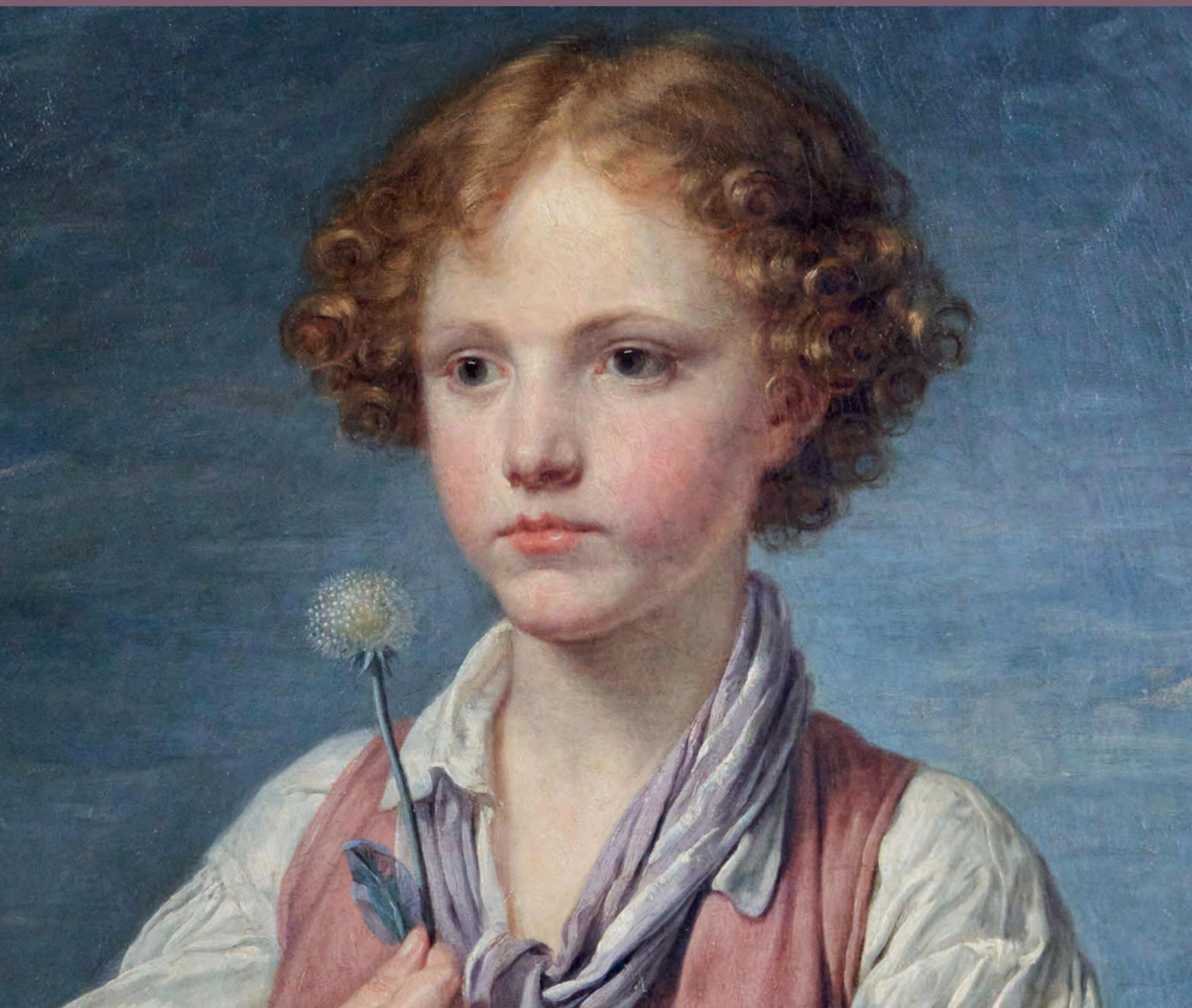
NEW RESEARCH ON ART AND ITS HISTORY

MAY 2025

THE BURLINGTON MAGAZINE

French art

Stained glass from Saint-Denis | Antoine Caron | Greuze and friendship | Millet | Joséphine-Arthurine Blot
Cimabue at the Louvre | Medieval pocket calendars | Ribera | Nicolas Besnier | Orphism | Electric dreams

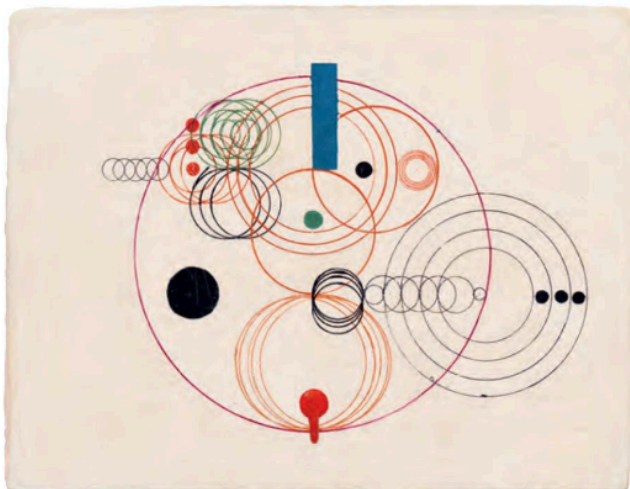




B is for Barney, by Alexander Calder (1898–1976). 1973. Steel stabile with red base, two white elements and two black elements, 30.5 by 35.6 by 15.2 cm. **BEN BROWN FINE ARTS, LONDON**



Head of a bearded god.
Roman, c.2nd century CE.
Marble, 20 cm.
CHARLES EDE, LONDON

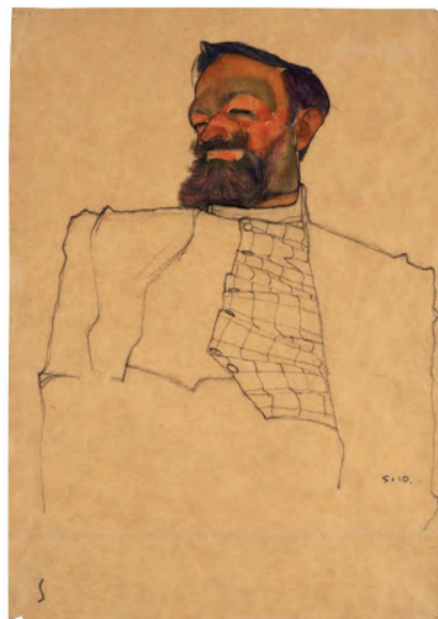


Untitled, by Waldemar Cordeiro (1925–73). 1952. Enamel on plywood, 23.5 by 30.5 cm. **THE MAYOR GALLERY, LONDON**

THIS MONTH ninety prestigious galleries will bring works of art, antiquities, jewellery and design objects spanning millennia to Manhattan for TEFAF New York. Since its amalgamation from two annual fairs to one in 2021, TEFAF New York has placed heavier emphasis on modern and contemporary art. Alongside the main exhibition at the Wade Thompson Drill Hall, visitors also have exclusive access to the Armory's sixteen historic rooms, which are generally closed to public. Smaller in scale than its Maastricht counterpart, the New York fair is no less rigorous in its vetting process, and it retains its academic focus and values to advance art as a bridge for cultural understanding, heritage preservation and global connectivity.

This year the TEFAF Museum Restoration Fund has been co-awarded to the Condé Museum, Chantilly, and the Hispanic Society Museum and Library, New York, for the respective restoration of two mid-fifteenth-century illuminated manuscripts. The Hispanic Society's preservation project of the Black Book of Hours – one of only seven extant illuminated manuscripts on black-coloured vellum – features as the topic of a panel discussion at TEFAF Talks. Other subjects in the programme include art collecting, philanthropy and the challenges of cultural preservation in the face of environmental threats. TEFAF New York coincides with the Independent Art Fair and Frieze New York, which, along with major auctions of modern and contemporary art at Christie's, Sotheby's and Phillips's New York locations, should make for a lively fortnight in the world's top performing art market.

For more information please visit [TEFAF.com](https://www.tefaf.com)



Carl Reininghaus, by Egon Schiele (1890–1914). 1910. Watercolour, gouache and black crayon on paper, 44.5 by 31.8 cm. **RICHARD NAGY, LONDON**