

BLOUIN ART+AUCTION

THE INTERNATIONAL MAGAZINE FOR ART COLLECTORS

OCTOBER 2014

MOVERS+SHAKERS

LONDON

Renaissance Men



Hugo Nathan

Wentworth Beaumont

A pair of Dickinson veterans, **Hugo Nathan** and **Wentworth Beaumont**, have joined forces to found **Beaumont Nathan**, a boutique international art brokerage and advisory business in Mayfair. Between them, the pair boasts more than 25 years' experience buying

and selling fine art, from Old Masters to contemporary works. "Through our own expertise and experience, and that of our advisory board and consultants, we have the ability to guide people in every sector of the fine-art market," Nathan says. Most recently, he was gallery president of Dickinson Roundell in New York, where he was in charge of U.S. operations. Beaumont, meanwhile, was director of Simon C. Dickinson, London. Nathan notes that they bring a unique competitive edge to their practice. "We pride ourselves on trying to find value for our clients, and looking for museum-quality works in unfashionable areas, rather than simply chasing what's hot," he says. —BM

NEW YORK

New Directions

Following its move to Norfolk Street last year, the **Bureau** gallery has hired a new director, **Mary Grace Wright**, a former associate director with SoHo's Team Gallery. Prior to working at Team, Wright was director at Martos Gallery in Chelsea, where she helped open the experimental project space Shoot the Lobster. Wright's goal in her new role is to increase the exposure of Bureau's artists, who include Erica Baum, Ellie Ga, and Tom Holmes. The gallery, which is run by **Gabrielle Giattino**, will show at Frieze London this month and also plans to exhibit work by **Matt Hoyt** in November. Wright notes this is not her first



Mary Grace Wright

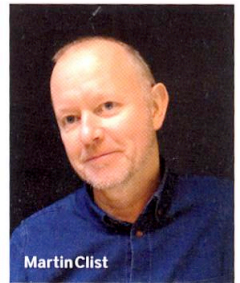
professional encounter with Giattino: "Gabrielle has been a close mentor to me since my arrival in New York."

—MICHAELA REGEHR

LONDON

Defying Classification

Now a seasoned expert in the arenas of both antiquities and contemporary art, **Martin Clist**, a Slade School of Fine Art alumnus, began his career as manager of the Whitechapel Gallery under Nicholas Serota. Both men have since moved on, and in his new role as managing director of the 43-year-old **Charles Ede** in Mayfair, Clist is set to invigorate the gallery's reputation by staging catalogued exhibitions of Classical and pre-Classical antiquities from Cyprus, Egypt, Greece, Italy, and the Near East. His appointment also coincides with the establishment's move from its longtime home on Brook Street to Three Kings Yard, a stone's throw from Claridge's hotel, an artemis favorite. Clist, who most recently worked at London's Rossi & Rossi gallery as director of Asian art says, "I'm thrilled to have the opportunity to take up this position with Charles Ede, a firm that has enjoyed the highest reputation within the international trade for many decades." —JUDD TULLY



Martin Clist