

TEFAF Maastricht *Focus* Charles Ede and Sean Kelly

Antiquities specialists **Charles Ede** of London and Contemporary New York gallery **Sean Kelly** share a stand at *TEFAF Maastricht's* inaugural *Focus* section, which is aimed at presenting complementary works from different artists and disciplines.

Charis Tyndall, director of Charles Ede, which has stood at the fair since 2000, says that the new section was welcome news, giving the firm the chance to stage a collaborative stand while still running its usual space in the antiquities section.

"We had been wanting to do another show with Sean Kelly gallery for some time, having taken a stand together at *TEFAF New York Fall* in 2019, which was a great success," she tells *ATG*.

"When we heard of this new

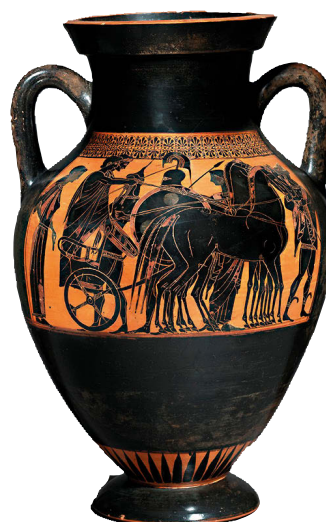
initiative, we thought it could be the perfect opportunity to create a carefully curated mix of ancient and contemporary works, with the ability to – quite literally – focus."

Intriguing concept

The stand will pair red- and black-figure ware with recent paintings by Callum Innes inspired by the ancient works provided by the New York gallery. Tyndall adds: "The methods of production have many similarities – an intriguing concept when you think that one is sculptural and the other two dimensional.

"Each work is made by first building up the surface, then laying colour, then removing colour to create the end result."

On Kelly's suggestion, the stand has been designed by Contemporary



Above: Greek black-figure belly amphora with Herakles, Athens, c.530 BC, Antimenes Painter, terracotta, 20½in (51.5cm) high, priced **€190,000**.

Mexican furniture designer Gloria Cortina. Tyndall says: "She rounds off the whole show by creating pieces to help display our vases and making a more domestic setting through her beautiful furniture. In the end we have come up with a display that encompasses everything that *TEFAF* is about and demonstrates how you could live with such works in your own home."

The other participants in *Focus* are **Ceysson & Bénétière** (France); **Mayoral** (Spain); **Galerie Mitterrand** (France); **Bowman Sculpture** (UK); **Ketabi Bourdet** (France); **Altomani & Sons** (Italy); **Galerie Pascal Lansberg** (France) and **Galerie Pauline Pavec** (France).

► charlesede.com
► skny.com

five Questions



Flavio Gianassi of FG Fine Art specialises in Italian Old Master paintings and is among the dealers standing at the *TEFAF Maastricht Showcase* this year
flaviogianassi.com

1 How did you get your start?

It all started more than 20 years ago when a dear friend of mine opened an art gallery in Florence and, while I was still at the university, I started helping him with art fairs and exhibitions. He opened a space in New Bond Street where I moved in 2007 to manage it as director.

2 What is one great discovery you have made?

A recent, very interesting discovery concerns the provenance of a polyptych by the 14th century painter Cecco di Pietro. Through extensive archive research, I was able to trace back the provenance to the person who commissioned the altarpiece for the church of San Francesco in Pisa (pictured). The four panels will be shown at *TEFAF*.

3 What is one item you couldn't do without?

I think it must be my phone. It has now become a luxury to be able to detach yourself from it. It is also one of the main working tools.

4 What is your favourite appearance of an antique in a film, play or book?

The Goldfinch by Carel Fabritius and the book of the same title by Donna Tart. It's incredible how this little masterpiece of the Dutch golden age of painting has become the silent protagonist of such an intriguing,



Above: the polyptych by the 14th century painter Cecco di Pietro, priced around **€300,000**.

Dickensian, story.

5 Real ale or espresso martini?

Prosecco! (But a real ale would do the job, though.)



Call 01273 608374

MICHAEL BLOOMSTEIN PRECIOUS METALS

TRUSTED DEALERS OF PRECIOUS METALS SINCE 1935

Hours of business
Monday to Friday 9am-5pm

Please phone or email
for our registered envelope each insured up to £2500.00

30 GLOUCESTER ROAD, BRIGHTON, SUSSEX BN1 4AQ
www.bloomsteins.co.uk email: enquiries@bloomsteins.co.uk

